

DAILY RESEARCH, 30 JULI 2020

PT PROFINDO SEKURITAS INDONESIA

**GD PERMATA KUNINGAN LT 19
JL KUNINGAN MULIA KAV 9C GUNTUR SETIABUDI JAKARTA SELATAN 12980**

TELP +62 21 8378 0888

EMAIL : CUSTOMERSERVICE@PROFINDO.COM

WWW.PROFINDO.COM | PROCLICK.PROFINDO.COM

MARKET MOVERS



Bursa saham AS ditutup menguat setelah The Fed mempertahankan 0%-0.25% dan rencana stimulus pemerintah AS untuk pemulihan ekonomi. **DOW +0.61%, S&P +1.24%, NASDAQ +1.35%**

Bursa saham Eropa ditutup variatif setelah The Fed mempertahankan tingkat suku bunga rendah dan para investor mengamati perkembangan lonjakan kasus covid 19 yang diperkirakan akan menghambat proses pemulihan ekonomi. **Indeks DAX -0.10%, FTSE +0.04%, CAC +0.61%**

Bursa Saham Asia dibuka menguat setelah The Fed mempertahankan kebijakan suku bunga rendah 0%-0.25%. **Hang Seng +0.45%, KOSPI +0.49%, Nikkei +0.33%**

Harga minyak mentah dunia melemah setelah semakin meningkatnya kasus covid 19 di AS dan kemungkinan pembatasan wilayah membuat pemulihan ekonomi melambat. Harga emas ditutup menguat setelah pernyataan The Fed yang akan mengerahkan segala upaya untuk pemulihan ekonomi ditengah tekanan covid 19 yang terus meningkat membuat pelaku pasar mengalihkan asset mereka ke instrumen safe heaven. **WTI -0.12%, Brent Oil -0.02%, Gold +0.39%.**

IHSG pada perdagangan hari ini diperkirakan akan **BULLISH** dengan Range pergerakan **5085-5143** dengan saham-saham yang dapat diperhatikan : **KLBF AALI BTPS HMSP INKP TBIG**

MARET DATA

AMERIKA

DOW 30	26,539.57	+160.29	+0.61%
S&P 500	3,258.44	+40.00	+1.24%
NASDAQ	10,542.94	+140.85	+1.35%

EUROPE

DAX	12,822.26	-13.02	-0.10%
FTSE 100	6,131.46	+2.20	+0.04%
CAC 40	4,958.74	+29.80	+0.61%

ASIA

SHANGHAI	3,294.41	-0.14	+0.18%
HANGSENG	24,883.14	+110.38	+0.45%
SET	1,338.35	-2.57	-0.19%
KOSPI	2,274.16	+11.00	+0.49%
JCI	5,111.11	-1.88	-0.04%
NIKKEI	22,470.50	+73.39	+0.33%
ASX	6,048.60	+42.20	+0.70%

COMMODITIES

GOLD	1,960.95	+7.55	+0.39%
WTI OIL	41.22	-0.05	-0.12%
BRENT OIL	44.06	-0.07	-0.16%
COAL	55.45	+0.25	+0.45%
PALM OIL	2370	+42	+1.56%
TINS	17,937.50	-22.50	-0.13%
NICKEL	13,872.50	-37.50	-0.27%

EVENT & ECONOMIC CALENDER

ECONOMIC CALENDER :

INDONESIA

270720 MOTORBIKE SALES YoY (JUN)
LOAN GROWTH YoY (JUN)

GLOBAL

270720 HONG KONG TRADE BALANCE (JUN)
CHINA INDUSTRIAL PROFIT YoY (JUN)
JAPAN ALL INDUSTRY ACTIVITY INDEX MoM (MAY)

290720 US API CRUDE OIL STOCK CHANGE
KOREA CONSUMER CONFIDENCE (JUL)
AUSTRALIA INFLATION RATE YoY (Q2)
GERMANY IMPORT PRICE MoM (JUN)
FRANCE CONSUMER CONFIDENCE (JUL)
HONG KONG GDP RATE YoY (Q2)

300720 FED INTEREST RATE DECISION
JAPAN RETAIL SALES YoY (JUN)
FRANCE PPI MoM (JUN)
GERMANY GROWTH GDP RATE YoY (Q2)
HONG KONG RETAIL SALES YoY (JUN)
EUROPE CONSUMER CONFIDENCE FINAL (JUL)
GERMANY INFLATION RATE YoY (JUL)
US GDP GROWTH RATE QoQ (Q2)
US JOBLESS CLAIMS

310720 KOREA RETAIL SALES YoY (JUN)
JAPAN INDUSTRIAL PRODUCTION YoY (JUN)
CHINA NBS PMI MANUFACTURING (JUL)
FRANCE GDP GROWTH RATE QoQ (Q2)
GERMANY RETAIL SALES MoM (JUN)
FRANCE INFLATION RATE YoY (JUL)
EUROPE GDP GROWTH RATE QoQ (Q2)
EUROPE INFLATION RATE YoY (Q2)

CORPORATE ACTION :

DEVIDEN

270720 GHON RP 20 (CUM 2707, PAYMENT 1908)
280720 AMAG RP 30 (CUM 2807, PAYMENT 0608)
290720 FISH RP 75 (CUM 2907, PAYMENT 1908)
300720 SHIP RP 16 (CUM 3007, PAYMENT 1908)

RUPS

270720 WIIM PNBS PLAS PGLI MGRO MASA MAGP IATA BCAP
280720 WEGE TRUK SRSN MSKY IPTV INTP DOID
290720 ZONE UNIC UCID TAMU MERK MDKA KRAS KEEN KAEF INCO INAF FORU
CTBN CSRA ATIC
300720 YELO TPMA SLIS PALM IFII DYAN CTRA CLEO CITA BBYB BBKA ASRM

IPO

RIGHT ISSUE

JAKARTA COMPOSITE INDEX



PREVIOUS 29 JULI 2020

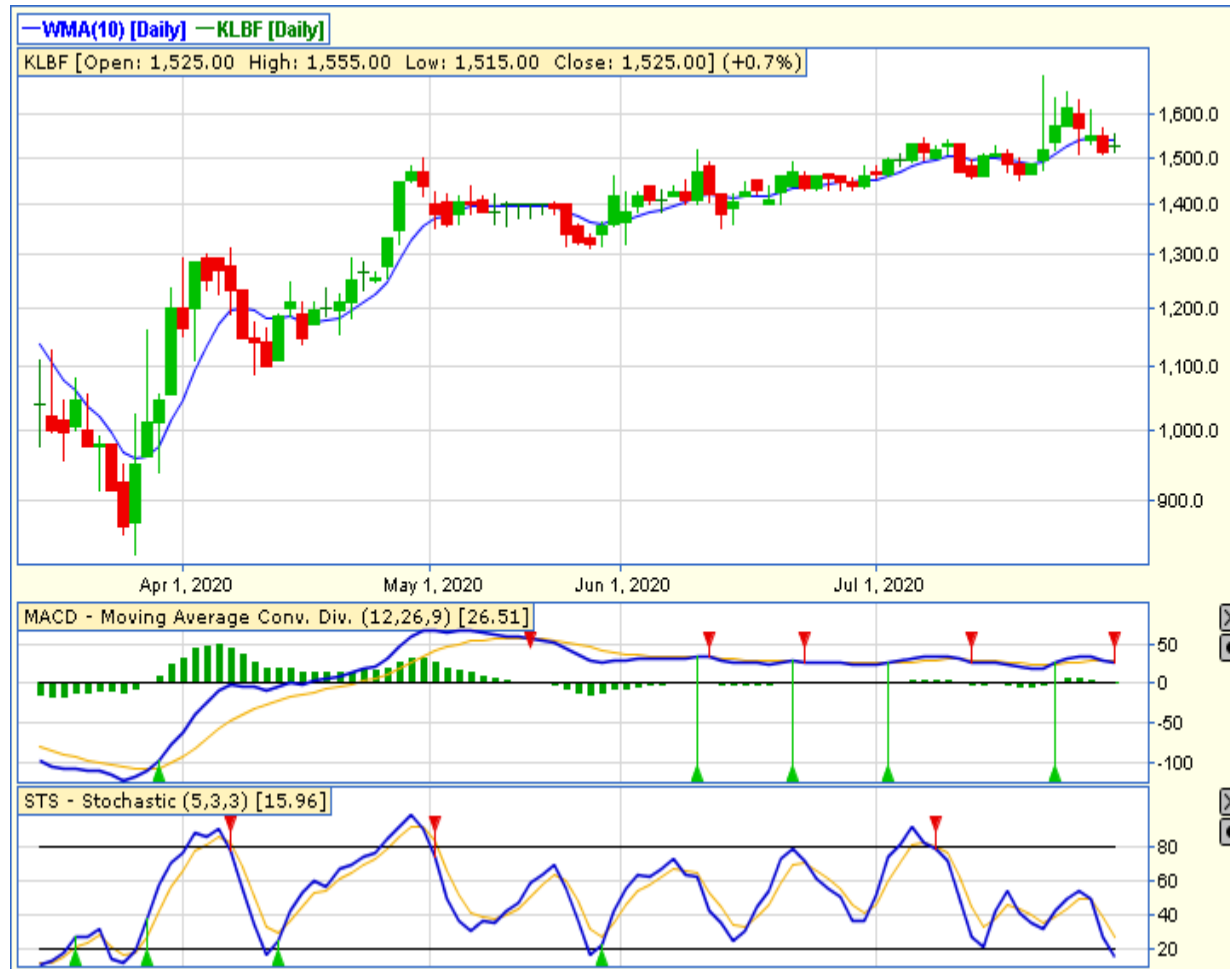
CLOSING	5111.113	-0.037%
TRANSACTION	IDR 8.25 TRILLION	
FOREIGN NETT	IDR 430 BIO (SELL)	

PREDICTION 30 JULI 2020

BULLISH
RANGE 5085-5143

HAMMER
STOCHASTIC : OVERSOLD
MACD : HISTOGRAM NEGATIF DAN NETRAL

TECHNICAL RECOMENDATION



KLBF – PT KALBE FARMA TBK

CLOSING 29/7/2020 RP 1525 (+0.7%)

BUY

TARGET PRICE 1695

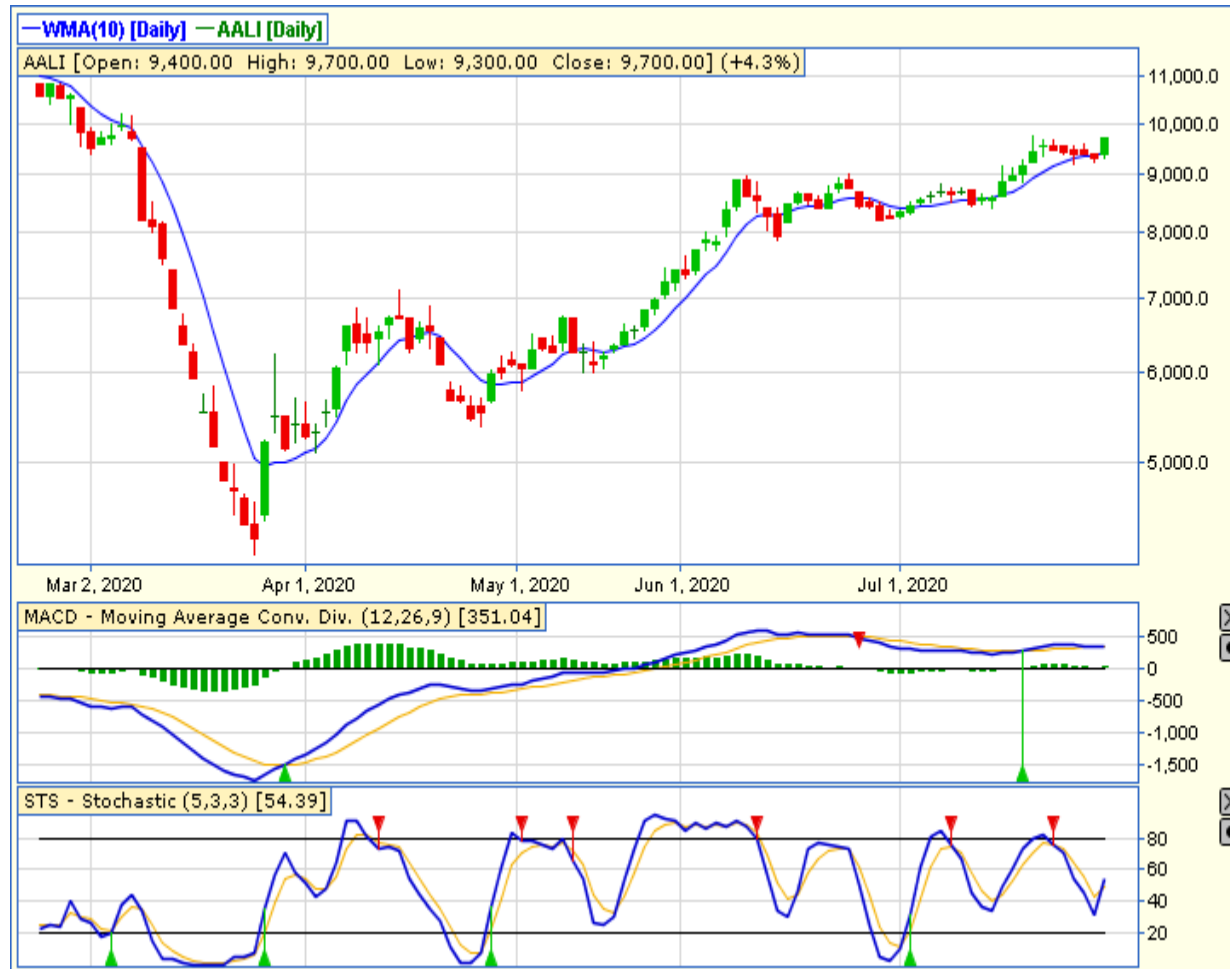
STOPLOSS < 1510

DOJI

STOCHASTIC : OVERSOLD

MACD : HISTOGRAM NEGATIF DAN DEATHCROSS

TECHNICAL RECOMENDATION



AAI – PT ASTRA AGRO LESTARI TBK

CLOSING 29/7/2020 RP 9700 (+4.3%)

BUY

TARGET PRICE 10875

STOPLOSS < 9300

MORNING STAR

STOCHASTIC : GOLDEN CROSS

MACD : HISTOGRAM POSITIF DAN UPTREND

TECHNICAL RECOMENDATION



BTPS – PT BTPN SYARIAH TBK

CLOSING 29/7/2020 RP 3430 (+5.9%)

**SELL ON STRENGTH
TAKE PROFIT 3920**

**BREAK OUT TRIANGLE
STOCHASTIC : GOLDEN CROSS
MACD : HISTOGRAM POSITIF DAN GOLDEN CROSS**

TECHNICAL RECOMENDATION



HMSP – PT HM SAMPOERNA TBK

CLOSING 29/7/2020 Rp 1725 (+2.37%)

**SELL ON STRENGTH
TAKE PROFIT 1795**

**BULLISH ENGULFING
STOCHASTIC : GOLDEN CROSS
MACD : HISTOGRAM NEGATIF MENGECIL DAN
BERSIAP GOLDEN CROSS**

TECHNICAL RECOMENDATION



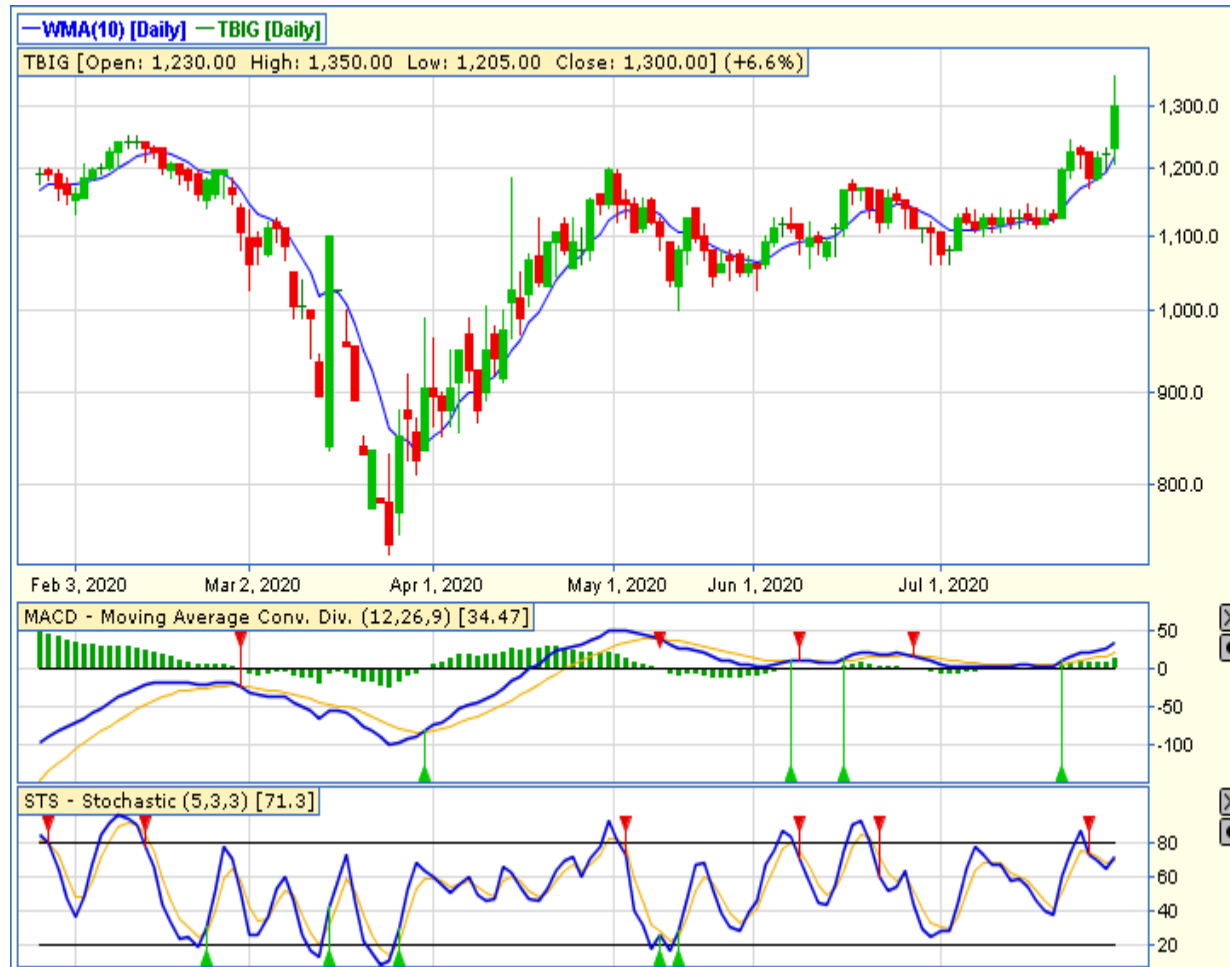
INKP – PT INDAH KIAT PULP & PAPER TBK

CLOSING 28/7/2020 RP 7850 (+5%)

**SELL ON STRENGTH
TAKE PROFIT 8250**

**BULLISH ENGULFING
STOCHASTIC : GOLDEN CROSS
MACD : HISTOGRAM NEGATIF DAN NETRAL**

TECHNICAL RECOMENDATION



**TBIG – PT TOWER BERSAMA INFRASTRUCTURE
TBK**

CLOSING 29/7/2020 RP 1300 (+6.6%)

**SELL ON STRENGTH
TAKE PROFIT 1350**

**WHITE CANDLE
STOCHASTIC : UPTREND
MACD : HISTOGRAM POSITIF DAN UPTREND**

RESEARCH TEAM



YULIANA

**RESEARCH ANALYST &
CORPORATE FINANCE**



DIMAS WP PRATAMA, CSA

TECHNICAL ANALYST

EQUITY CAPITAL MARKET TEAM



JESSIE JAMES

HEAD OF EQUITY SALES



PRASETYO NUGROHO

HEAD OF DEALING ROOM



GABRIELLA PRATIWY

HEAD OF ONLINE TRADING